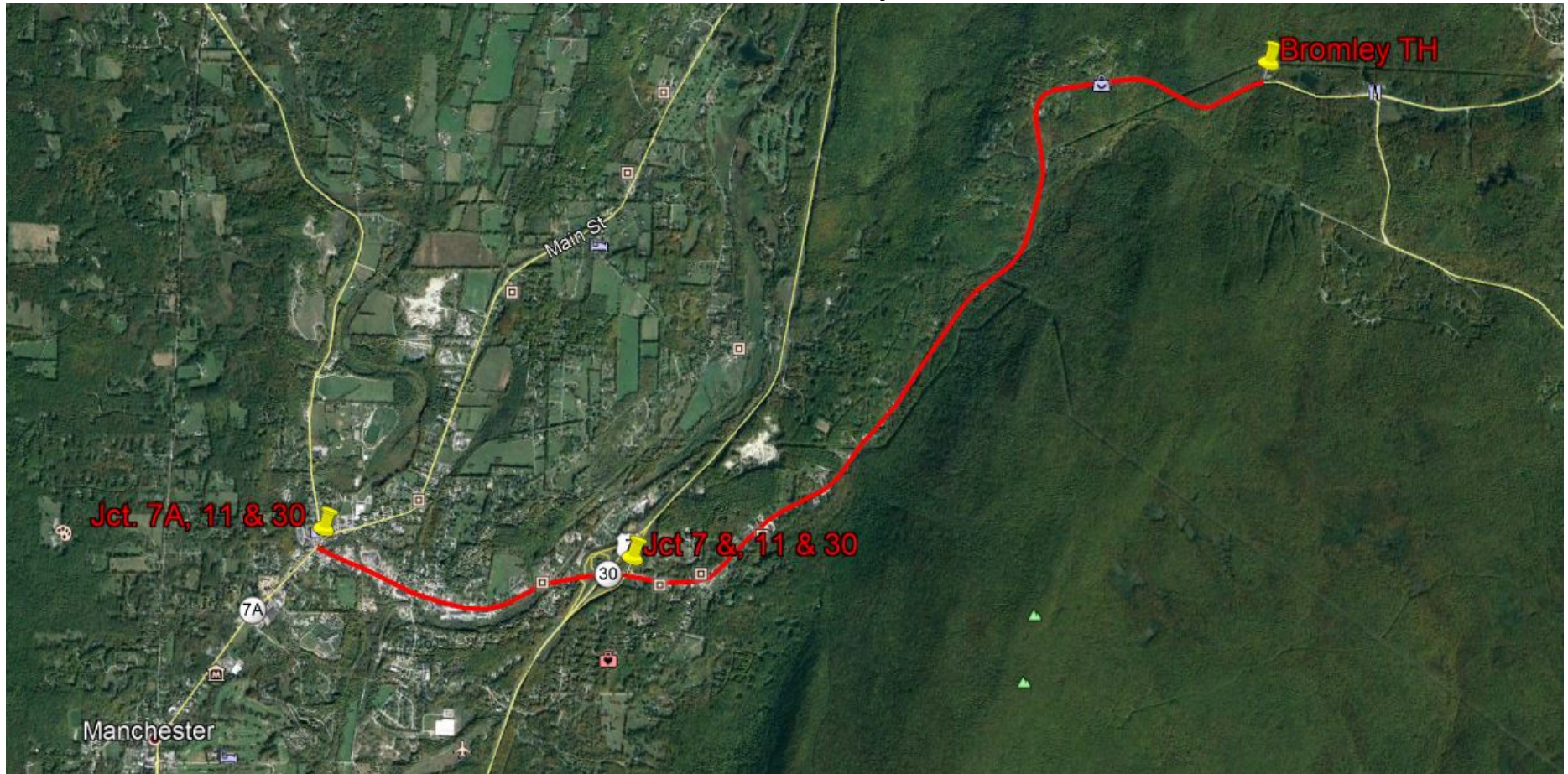


How To Get To The Bromley Trail Head



---- If arriving in Manchester from the North or South on Route 7A or 30, proceed to the traffic circle at the intersection of Routes 7A, 11 & 30. Bear East on 11 & 30 (Depot Street), continue 5.8 miles or about 10 minutes, and the trail head will be on your left.

----If coming from North or South on Route 7, get off at the Manchester exit and bear East (left turn if coming from the North; right turn if coming from the South), on Rts. 11 & 30, continue 4.3 miles or about 6 minutes, and the trail head will be on your left.

The parking lot is not well signed
but here's what it looks like.

